

2020

CCBE Year-in-Review



3251 Beacon Blvd.,
West Sacramento, CA 95691
Tel (800) 266-3382
www.theccbe.org

TABLE OF CONTENTS

Contents

Executive Summary _____	1
Financial Summary _____	3
Member Services Highlights _____	4
CCBE Executive Committee _____	7
2020 Board of Directors _____	8
Past CCBE Presidents _____	9

EXECUTIVE SUMMARY

Executive Summary

STRATEGIC HIGHLIGHTS

The California County Boards of Education (CCBE) is committed to be an organization that is dedicated to knowledge and equity by serving members who are engaged, and tenacious champions for public education. CCBE's mission is to serve and represent the county boards of education community by strengthening and promoting local governance, to enable county board members to help every California student succeed. CCBE is a dynamic network of members dedicated to maximizing education opportunities for all.

Fierce political battles, wildfires, racial unrest, and a pandemic that closed schools and businesses has marked 2020 as a year to go down in history. Alongside with CSBA, we consistently make the case that California schools and county offices need more resources to support students and as a result, the United States Department of Agriculture on Oct. 9 announced that it is extending flexibilities to allow free meals to continue to be available to all children throughout the entire 2020-21 school year. Originally set to expire at the end of the calendar year – a dangerous scenario advocated against by CSBA, CCBE and other advocacy groups – the USDA was authorized to extend these waivers in the federal continuing resolution. In the coming year, the CCBE Board of Directors will be looking into convening an advocacy subcommittee to further investigate ongoing funding needs to continue feeding our children and closing the digital divide.

FINANCIAL HIGHLIGHTS

With the intent to purposely spend down reserves, we continue to maintain a healthy reserve for our organization. We are always mindful of our responsibility to carefully shepherd our resources, but our commitment to you – our members – goes beyond saving money. CCBE's ongoing re-investment in advocacy and professional development and training opportunities continues to be an important focus now and in the future. Through surveys and evaluations, we consistently learn that our members want more professional training opportunities and services that help provide them with the tools and skills they need to do their job and meet their roles and responsibilities. We have worked hard to meet those needs and to grow member training opportunities. As we move forward, we will continue to provide on-going education through board development, new and experienced board member workshops and, of course, through our annual conference.

MEMBER SERVICES HIGHLIGHTS

CCBE membership gives county board members access to the resources that help them fulfill their unique and complex governance and leadership roles. CCBE is here to help its members, whether a member has been part of the education community for many years or is just starting out. New this year, a video was recorded that outlines the many benefits received as a member of CCBE and encourage you to visit www.theccbe.org to watch this video.

The Annual Conference Planning Committee put together an outstanding professional training virtual experience for all who attended. Once again, we had more than expected attendance at what has become the

EXECUTIVE SUMMARY

go-to conference for County Board members. Key relevant topics at this year's Annual Conference included: advocacy, equity, governance and health and wellness and innovation and technology.

We realize that it is important to your students that the professional growth of policy makers continue to occur, and that continuing education plays a critical role in ensuring all members are aware of the many changing parts of education. Governing can be challenging work, and we continue to identify and develop new ways to support board members in this endeavor. It is vital for the board and the county superintendent to work together as a team and we want to provide all our members with expanded learning opportunities that support the work of board members at the local level.

LOOKING BACK

2020 has been a highly unusual year for our membership that brought a worldwide pandemic, COVID-19, racial unrest, and demonstrations culminating with a very highly controversial presidential election. Despite the many challenges we have faced and endured this year, CCBE and its members are strong and have done an amazing job this year to accomplish CCBE's continuing goals, such as increased visibility in the education community, legislative impact, and high-quality professional development.

The Executive Committee started the year out with a powerful strategic planning retreat, where we worked on the continuing implementation of the Board of Directors direction and with staff, members, CSBA and our other partners. In the summer, the Board of Directors met virtually as well to engage in rich discussions, reviewing the growth from past years and challenges that continue to face California County Boards of Education and completing the planning for the upcoming year. The priorities for the year ahead include a continued focus on advocacy; and increased marketing and communications and on-going professional development but will remain flexible with the unknown certainties of the pandemic.

Though there is always room for improvement, one can't look back without recognizing that, thanks to the years of hard work by all of our prior executive committee and board members, and of our amazing staff, we truly succeeded in meeting our goals by every measure!

LOOKING AHEAD

I would like to thank you for your commitment to CCBE, big or small. It has been a great honor to be a part of CCBE's continued growth and our on-going efforts to serve all of you well. The diversity of our organization is one of our greatest assets. We learn from each other by working together. As we forge ahead in 2021, we recognize the significant opportunities before us that will shape public education well into the future. While many challenges remain, CCBE will continue to build on this foundation of success and focus on the hard, meaningful work that will have a lasting, positive impact on the students we serve and our organization for years to come. Thank you.

Janet Wohlgemuth
CCBE President

FINANCIAL SUMMARY

Financial Summary

The Fiscal Year 2019-20 budget was approved by the Board of Directors at its November 29, 2018 meeting. Throughout the year, adjustments were made in various operational expenses to reflect anticipated expenses during the 2019-20 fiscal year.

- Income: \$196,237.00
- Expenses: \$208,453.00
- Net Income (Loss): \$12,216.00
- Net Reserve Cash Balance: \$141,195.00

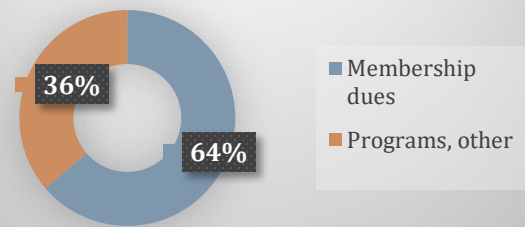
At its December 5, 2019 meeting, the Board of Directors approved the Fiscal Year 2020-21 budget and approved 20 percent membership dues increase. The 2020-21 CCBE membership includes 54 county offices of education representing 96.6 percent membership rate. The budget is projected for a net income gain of \$24,464.00.

The budget is a living document that will change over the course of the year. The Treasurer and Executive Committee will be kept informed of the need for changes to the budget in between meetings of the Board of Directors and the board will receive budget revision reports at scheduled meetings.

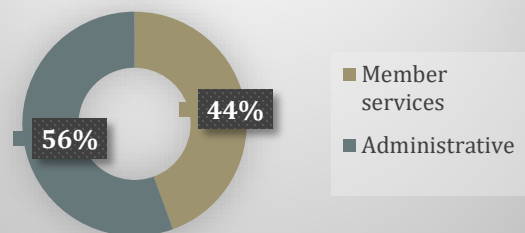
The CCBE financial condition continues to be strong and healthy with a strong reserve balance.

FINANCIAL STRENGTH AND STABILITY

2019-20 REVENUES



2019-20 EXPENSES



MEMBER SERVICES HIGHLIGHTS

Member Services Highlights

ADVOCACY

CCBE participated in the NSBA Advocacy Institute on February 2-4, 2020, in Washington, D.C. learning from state leaders how to extend and maximize our organizational federal advocacy experience, exploring successful strategies for communicating, building campaigns, and leveraging resources to defeat proposals that are harmful to public education in our state and communities. As a part of continuing towards achieving CCBE advocacy goals, President Janet Wohlgemuth and President-elect Rick Shea, along with many other county board members attended the NSBA Advocacy Institute where over 600 school board members, state association leaders and education advocates participated in a successful Advocacy Institute.

With four appointed county board members serving on the CSBA Legislative Committee which is comprised of school district and county boards of education members from across the state representing a diverse membership, CCBE participated in advocating for increased funding for schools and county offices. The four county board members appointed to serve on this committee provides CCBE with a greater voice on the impact legislation has on county boards of education at the state and federal levels. The four county board members appointed to serve on this year's committee were; Dana Dean, CCBE Immediate Past President (Solano COE), Joaquin Rivera, CSBA Director-at-Large, Hispanic (Alameda COE), Rosemary Kamei (Santa Clara COE), and Dwight Pierson (Plumas County & USD).

During 2020, CSBA Legislative Committee met frequently throughout the year to discuss and take positions on legislative bills. This year has been an eventful year for county boards of education in California that has been mostly around the pandemic and the impact to education. We have had opportunities to advocate for (and to expect) increased funding for our schools and county offices. There has also been a *more-than-usual* amount of attention on digital and technology access for students and teachers. It has been critically important for us to educate our representatives and communities on the essential, integral role that County Boards have in education, and we have been dedicated to that effort. It is essential that we work as one voice.

POLICY

In collaboration with CSBA, sample of board policies for use by county boards of education have been made available through CSBA's GAMUT. This year, the CSBA policy department issued regular updates to the county-specific policies in January and July and were sent by email to COE subscribers based on the type of subscription they have. They were also posted to GAMUT Online. For any sample policy questions, ordering information and a fee schedule, please contact CSBA Policy Services at (800) 266-3382 or email at gamut@csba.org.

MEMBER SERVICES HIGHLIGHTS

MEMBER DEVELOPMENT AND TRAINING

CCBE's 2020 Annual Conference, successfully convened a virtual event on September 11-12, 2020. More than 140 attendees attended this year's conference. This conference is a great opportunity for county board members from across the state to network, share best practices and better understand critical issues that specifically impact county offices of education and the students they serve. We were thrilled to present our members with vital information that addressed the unique issues faced by county boards of education and the students they serve during these unprecedented times. Programing highlights included three general sessions, that specifically dedicated to supporting students learning in the time of COVID as well as how to bridge the digital divide for county students and staff. In addition, the General Membership session and eleven breakout sessions on effective and equitable distance learning opportunities, advocacy, budget and finance, governance, equity, the political impact, and landscape on schools in the coming year and networking opportunities.

Unfortunately, due to the pandemic, this year's CCBE County Board Governance had to be cancelled, however, the CCBE Professional Development Committee is currently working on developing next year's training as a virtual event spread out over four to five weeks that newly elected and veteran members will not want to miss.

This year brings a long-awaited new training opportunity for members to attend the newly launched CSBA MIG COE program. This program is specially designed for county office board members to provide the knowledge and skills to build and support an effective governance structure. MIG COE features four courses: Foundation of Effective Governance/Setting Direction; Policy and Judicial Review/Student Learning and Achievement; Finance, Facilities and Charter Schools; and Community Relations and Advocacy/Governance integration. Interwoven into each course is a focus on equity and issues specific to COEs. In addition, CSBA has hired new faculty, including current and retired COE board members and superintendents. Courses begin Dec. 8 and will be delivered virtually through April 2021. You can register for this event at <https://csba.org/TrainingAndEvents/MastersInGovernance/MIGCOECourse1>. Registration to attend all four courses will close December 4.

COMMUNICATIONS

CCBE published monthly articles in the CSBA School*News* that celebrated county best practices delved into issues county boards faced throughout the state, legislative advocacy topics and upcoming events. Articles included solutions in preventing human trafficking, county offices of education working together for the common good, professional development for county and district board members and why it is important, and a guideline report for superintendent compensation.

TAKEAWAYS

For CCBE, 2020 has been a year of change and flexibility. It has been a time to take a step back, evaluate our processes, training offerings, master calendar, bylaws and budget, and modify as needed all facets of CCBE to

MEMBER SERVICES HIGHLIGHTS

ensure that we are best serving our membership. This past year has truly become the year of strategic focus for CCBE.

To achieve our mission to help every student succeed, it is important for COE Board members to pursue ongoing professional development and training. Please be sure to register and attend the upcoming County Board Governance training scheduled in March 2021 as a virtual event. Please visit www.theccbe.org/Events/CountyBoardGovernanceWorkshop/ for more information and to register for this professional development opportunity.

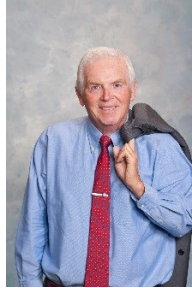
CCBE EXECUTIVE COMMITTEE

CCBE Executive Committee

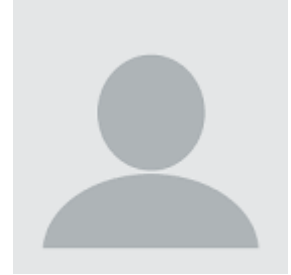
JANET WOHLGEMUTH
PRESIDENT



RICK SHEA
PRESIDENT-ELECT



VACANT
VICE PRESIDENT



DANA DEAN
IMMEDIATE PAST PRESIDENT



MATT TAYLOR
TREASURER



BRUCE DENNIS
CSBA DIRECTOR-AT-LARGE,
COUNTY



CCBE Staff

CHARLYN TUTER
PROGRAM MANAGER



2020 BOARD OF DIRECTORS

2020 Board of Directors

David Browning (Lake COE), Region 1

Brenda Duchi (Siskiyou COE), Region 2

Gina Cuclis (Sonoma COE), Region 3

David Patterson (Placer COE), Region 4

Beverly Gerard (San Mateo COE), Region 5

Shelton Yip (Yolo COE), Region 6

Vacant (Alameda & Contra Costa Counties), Region 7

Juliana Feriani (Tuolumne COE), Region 8

Rose Filicetti (Santa Cruz COE), Region 9

Marcy Masumoto (Fresno COE), Region 10

Rachel Ulrich (Ventura COE), Region 11

Donald Cowan (Kern COE), Region 12

Rebecca Gomez (Orange COE), Region 15

Laura Mancha (San Bernardino COE), Region 16

Guadalupe Gonzalez (San Diego COE), Region 17

Victor Jaime (Imperial COE), Region 18

Rosemary Kamei (Santa Clara COE), Region 20

Monte Perez (Los Angeles COE), Region 21-24

Ad Hoc Member of the Board

Sherry Crawford, (Siskiyou COE), CSBA Region 2 Director

Joaquin Rivera, (Alameda COE), CSBA Director-at-Large, Hispanic

PAST CCBE PRESIDENTS

Past CCBE Presidents

NAME	YEAR	COUNTY
Dana Dean	2019	Solano County
Bruce Dennis	2018	Riverside County
Amy Christianson	2017	Butte County
Joaquin Rivera	2016	Alameda County
Juliana Feriani	2015	Tuolumne County
Heidi Weiland	2014	El Dorado County
Dr. Ramon Flores	2013	Ventura County
Ken Berrick	2012	Alameda County
Raymond H. Peterson	2011	Sonoma County
Cathie C. Bustos	2010	Madera County
Lynne Craig	2009	Riverside County
Dr. Jack Bedell	2008	Orange County
Susan Hartley	2007	San Diego County
Jennifer Kresge	2006	Napa County
Barbara Thomas	2005	Fresno County
Nick Aguilar	2004	San Diego County
Sara J. Wilkins	2003	Madera County
Janet Lindgren	2002	Ventura County
Mark Cooper	2001	Lake County
Sophia Waugh	2000	Los Angeles County
Elizabeth Parker	1999	Orange County
Beverly Willis-Gerard	1998	San Mateo County
Daniel Clark	1997	Napa County
Jerome Wiggins	1996	Alameda County
Dr. David O. Stine	1995	San Bernardino County
Michaelene D. Wagner	1994	Los Angeles County
Martin Block	1993	San Diego County
Ruth Miller	1992	Riverside County
Robert Pokorny	1991	Solano County
Delores Devenport	1990	Yuba County
Pat Hicks	1989	Lake County
Brenda Brimhall	1988	Butte County
Betty Gibbel	1986 and 1987	Riverside County
Dr. Frank Gladen	1985	Butte County
Charles Spear	1984	Contra Costa County
Dean McCormick	1982 and 1983	Orange County
Barbara Wheatland	1981	Santa Clara County
Dick Bragg	1979 and 1980	Monterey County
Carol Slavick	1977 and 1978	San Mateo County
Primo Ruiz	1976	Contra Costa County
Otto Zentner	1975	Merced County
Jim Tuttle	1973 and 1974	Imperial County
Lucille Mausey	1971 and 1972	Contra Costa County
Dr. Dan Towler	1969 and 1970	Los Angeles County
Dr. George Muench	1967 and 1968	Santa Clara County
Ruth Harris	1965 and 1966	San Bernardino County
Paul Madsen	1963 and 1964	Santa Clara County
Ruth Colwell	1961 and 1962	Los Angeles County
Dr. John Kenney	1959 and 1960	Sonoma County